



# 中国海关外贸统计数据处理的介绍

## China Customs Data Processing System

联合国统计司国际货物贸易统计地区研讨会

Regional Workshop on IMTS

2017-9-11 Suzhou, china



# 内容

## Content

### 简介

#### Brief Introduction

- 法律基础Legal base
- 组织架构  
Organization
- 统计制度  
Methodology

### 数据流程

#### Data processing

- 数据项目Data elements
- 资料来源Source
- 数据处理  
Processing

### 质量控制

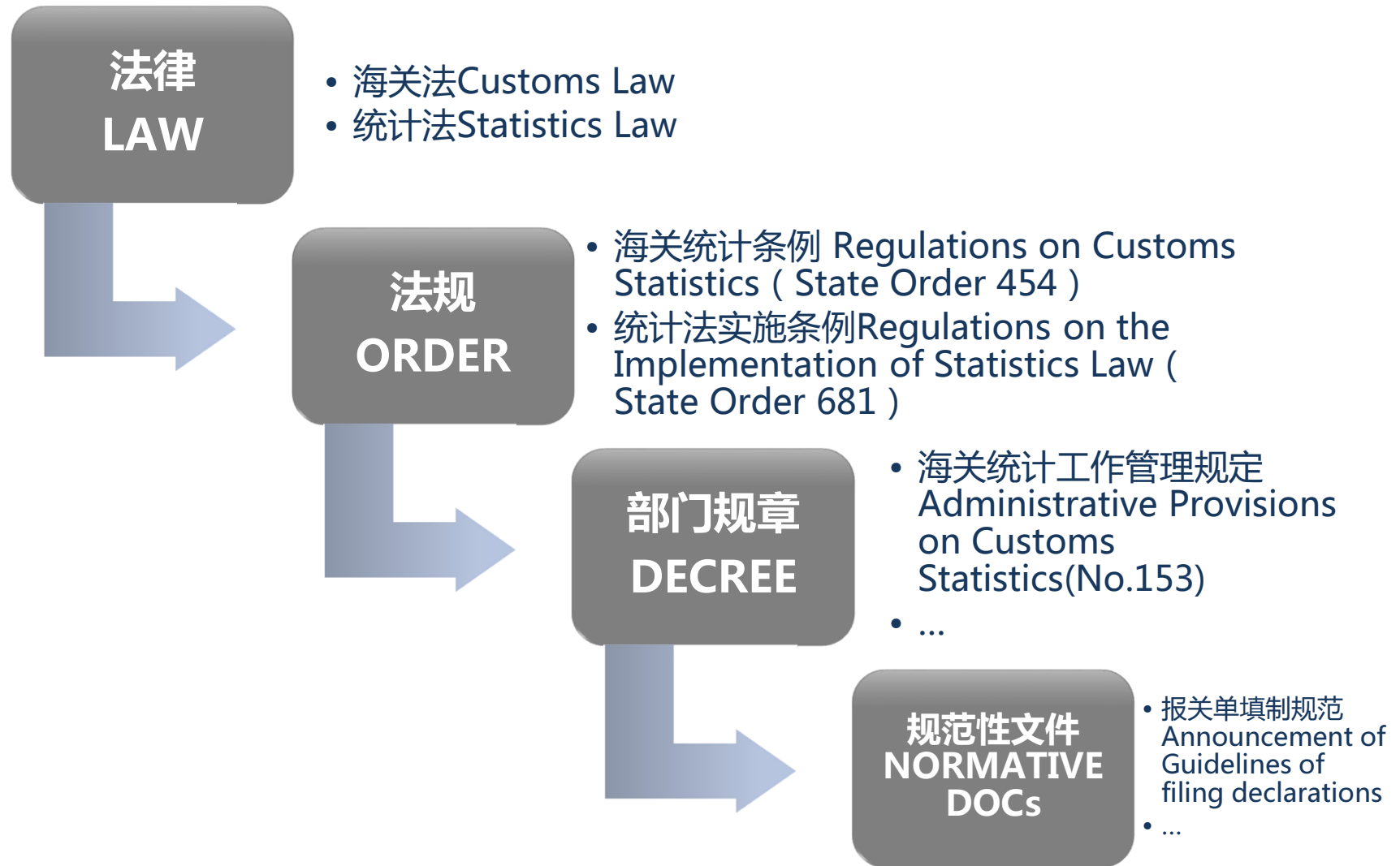
#### Quality Control

- 风险识别Risk Identification
- 核查Inquiries
- 更正Correction



# 海关统计法律基础

## Legal Base

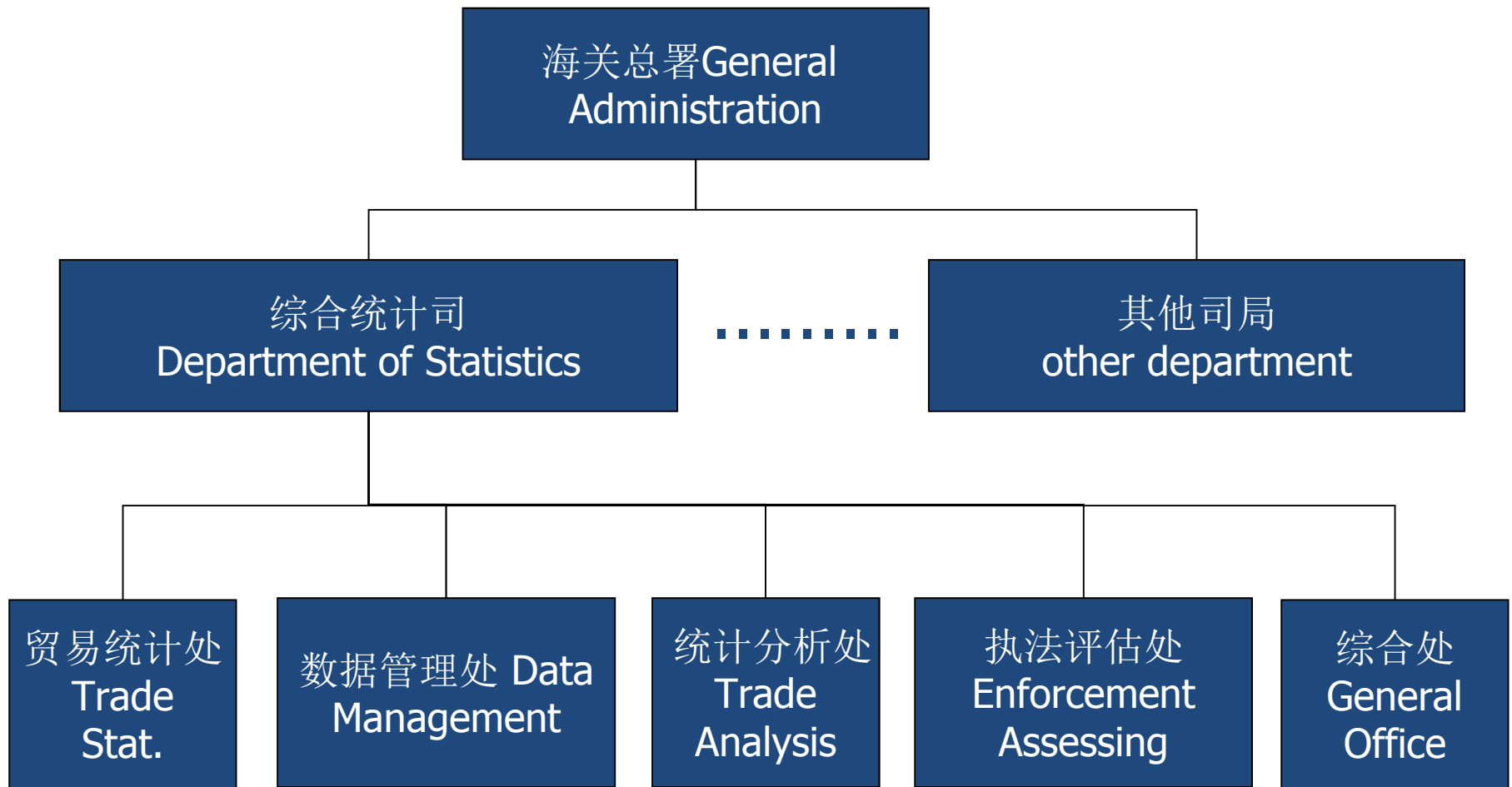






# 海关统计组织架构

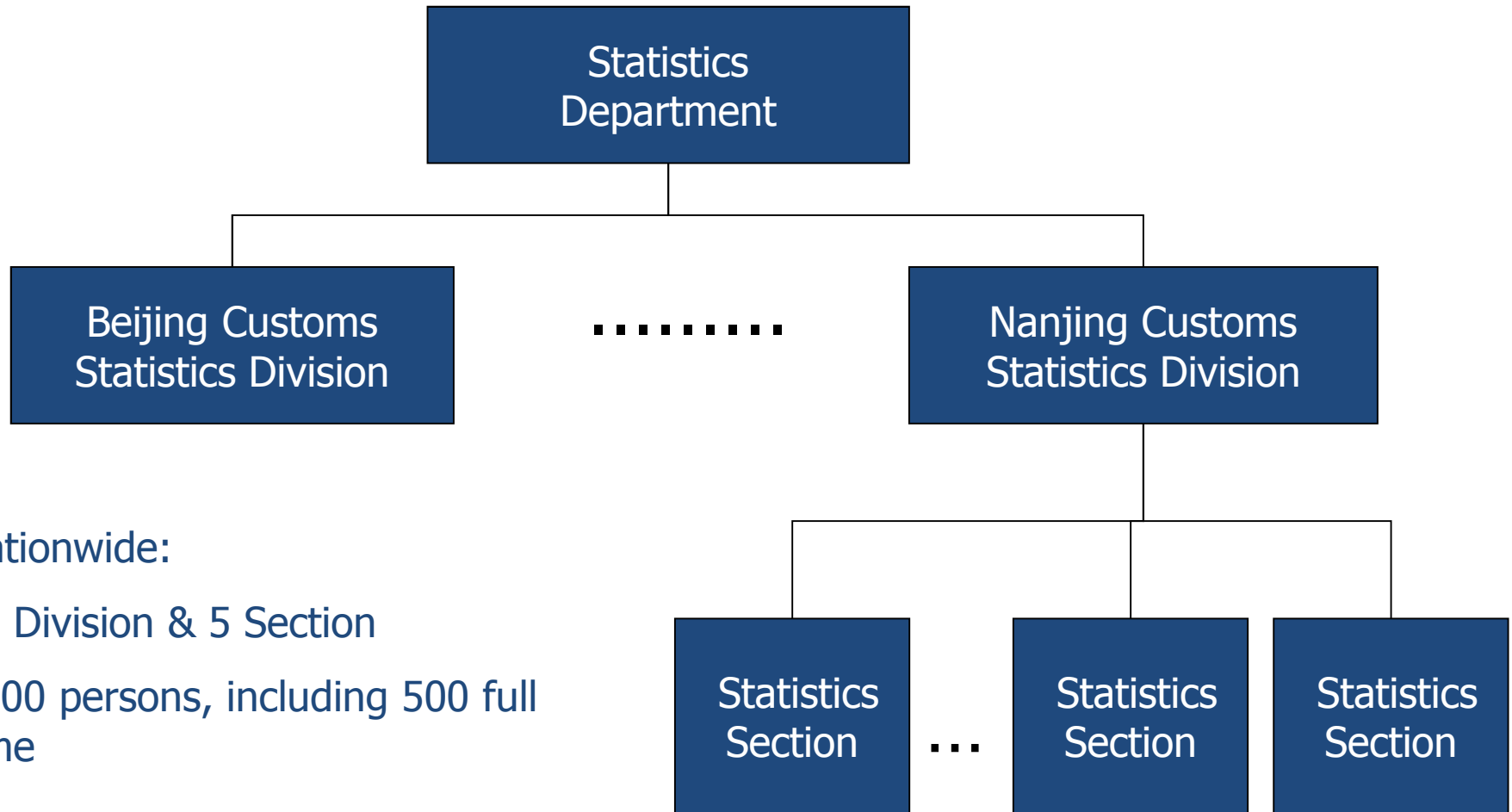
## Organization of Customs Statistic





# 海关统计组织架构

## Organization of Customs Statistic



Nationwide:

37 Division & 5 Section

1500 persons, including 500 full time

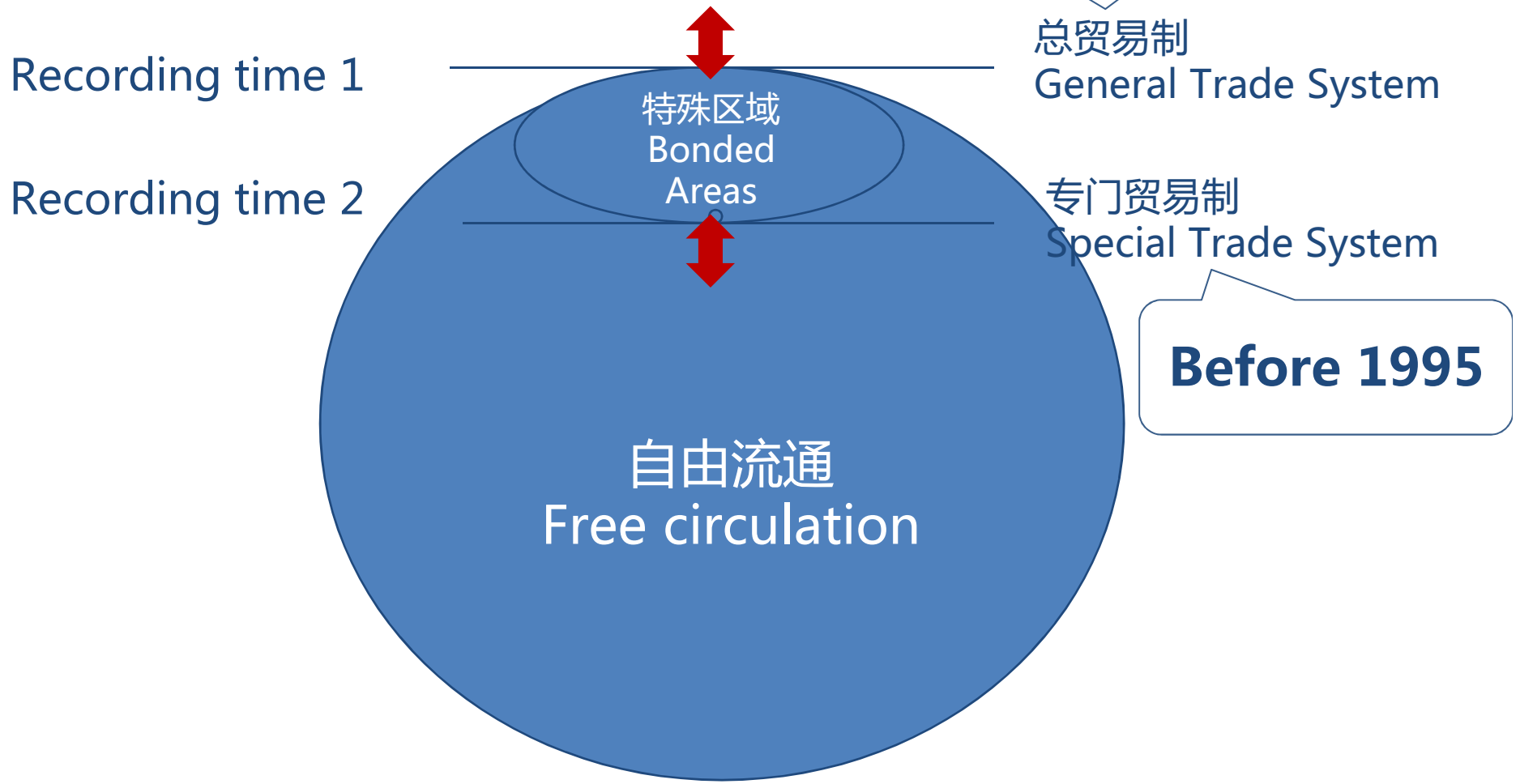
# 统计 范围

COVERAGE  
OF  
STATS





# 统计范围 Coverage







# 统计范围

## Coverage

### 不包括Exclusions:

- 过境、转运和通运货物；
  - 暂时进出口货物；
  - 货币及货币用黄金；
  - 租赁期1年以下的租赁进出口货物；
  - 因残损、短少、品质不良或者规格不符而免费补偿或者更换的进出口货物；
  - 修理检测物品等。
- 
- Goods in transit through China;
  - Temporary import or export;
  - Personal effects for passenger use;
  - Currency and gold used as currency;
  - Goods on lease for less than one year;
  - Goods that are compensated free of charge because of damage, inferior quality;
  - Goods in repair or test...

# 数据 项目

Data  
Elements



# 关于货物贸易所需要了解的要素

What we need to know about trade

商品

What traded



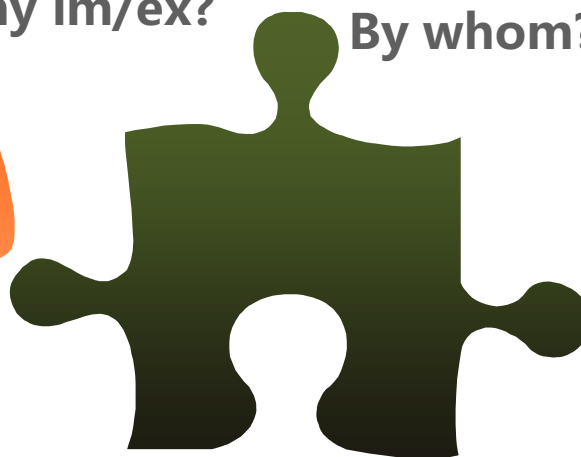
贸易方式

Why im/ex?



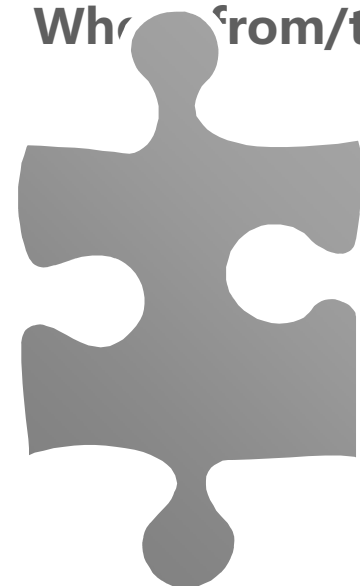
贸易商

By whom?



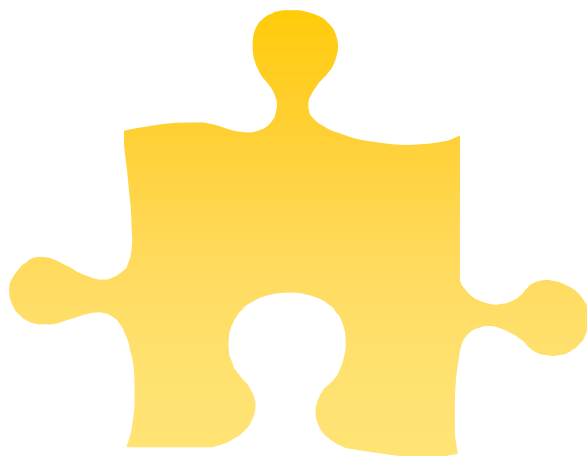
贸易伙伴

Whom 'from/to'?



运输方式

How shipped?



进出境地点

Where declared?



境内目的地货源地

Where delivered/produced

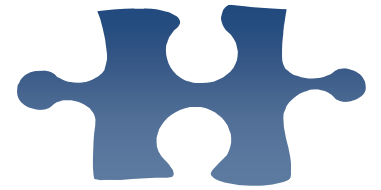


进出境时间

When?



# 商品 Commodity

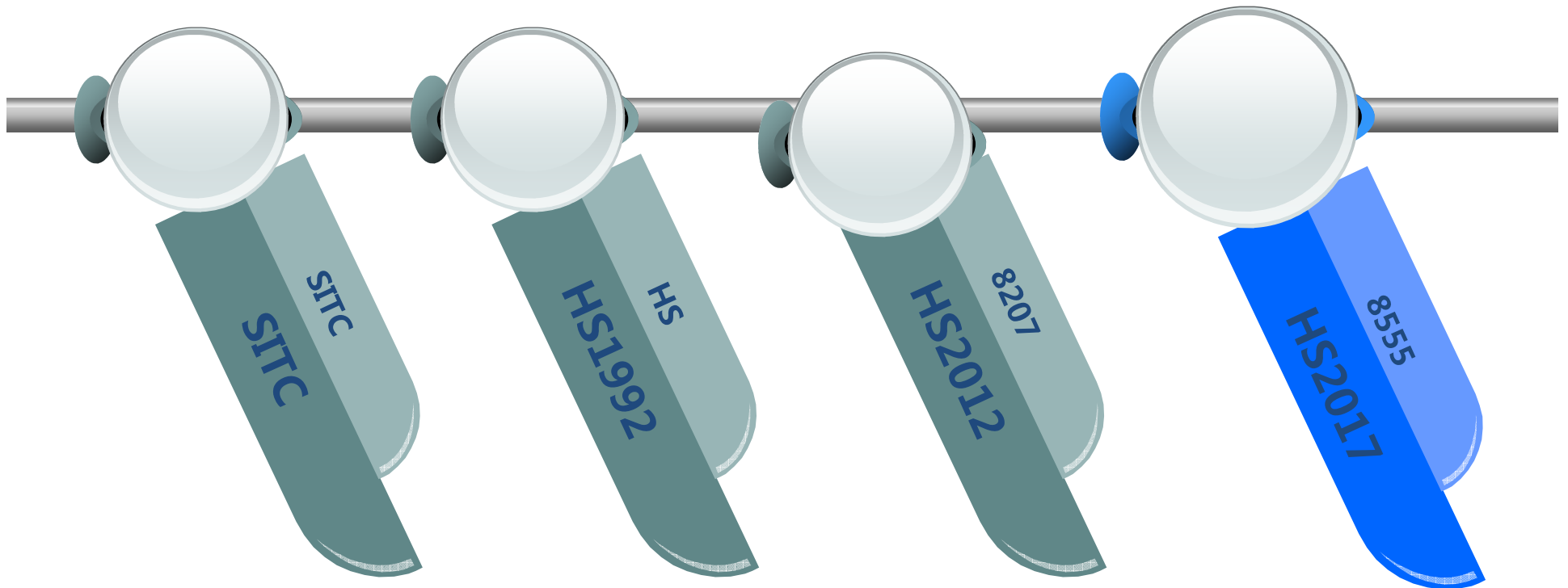


1980

1992

2012

2017



中华人民共和国海关统计商品目录

The Commodity Classification for Customs Statistics  
of the People's Republic of China (CCCC)



# 商品 Commodity



按国际贸易标准分类统计  
The Composition of Total Exports by SITC

单位：亿美元，% Unit:100m USD，%

年度YEAR	初级产品PRIMARY PRODUCTS		制成品FINISHED PRODUCTS	
	金额VALUE	占比SHARE	金额VALUE	占比SHARE
1980	91.14	50.3	90.06	49.7
1985	138.28	50.6	125.22	49.4
1990	158.86	25.6	462.04	74.4
1995	214.85	14.4	1272.85	85.6
2000	254.60	10.2	2237.50	89.8
2005	490.39	6.4	7129.60	93.6
2010	817.17	5.2	14962.16	94.8
2015	1039.77	4.6	21709.72	95.4
2016	1050.70	5.0	19930.83	95.0



# 贸易方式

## Customs Regime



- 货物类型 Type of goods
- 共20种贸易方式列入海关统计
- 监管方式的后2位 Last 2 digits of the procedure code
- 体现贸易目的 Indicate the **purpose** of trade
  - 加工for processing
  - 捐赠for donations
  - 消费for consumptions...

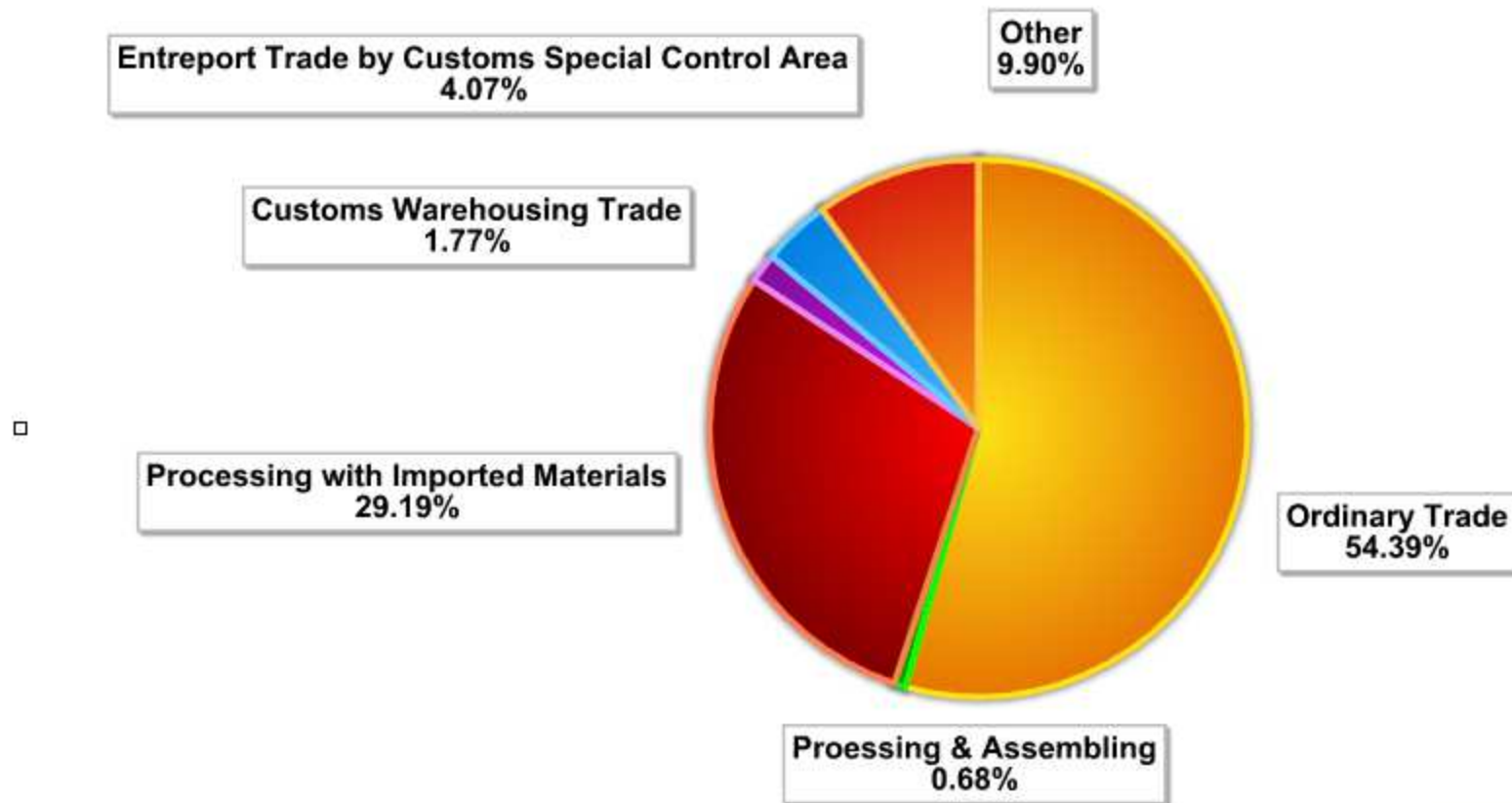
一般贸易 Ordinary Trade	租赁货物 Goods on Lease
国家及国际组织捐赠 Aid or Donation Between Governments or by International Organizations	外商投资企业进口设备 Equipment or Materials Imported as Investment by Foreign-Invested Enterprises
其他捐赠 Other Donation	出境加工 Outward Processing
补偿贸易 Compensation Trade	易货贸易 Barter Trade
来料加工 Processing and Assembling	免税外汇商品 Duty-free Commodities on Payment of Foreign Currency
进料加工 Processing with Imported Materials	免税品 Duty-free Goods
寄售代销 Goods on Consignment	保税仓库进出境货物 Customs Warehousing Trade
边境小额贸易 Border Trade	特殊监管区域物流货物 Entrepot Trade by Customs Special Control area
加工贸易进口设备 Equipment for Processing trade	特殊监管区域进口设备 Equipment Imported into Customs Special Control area
对外工程承包出口货物 Contracting Projects	其他 Other



# 贸易方式 Customs Regime



2017年前7个月全国出口货物贸易方式构成图  
Export from Jan. to Jul. by Customs Regime

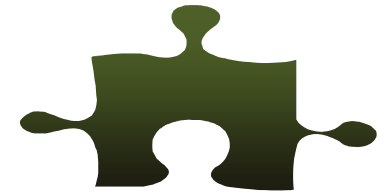






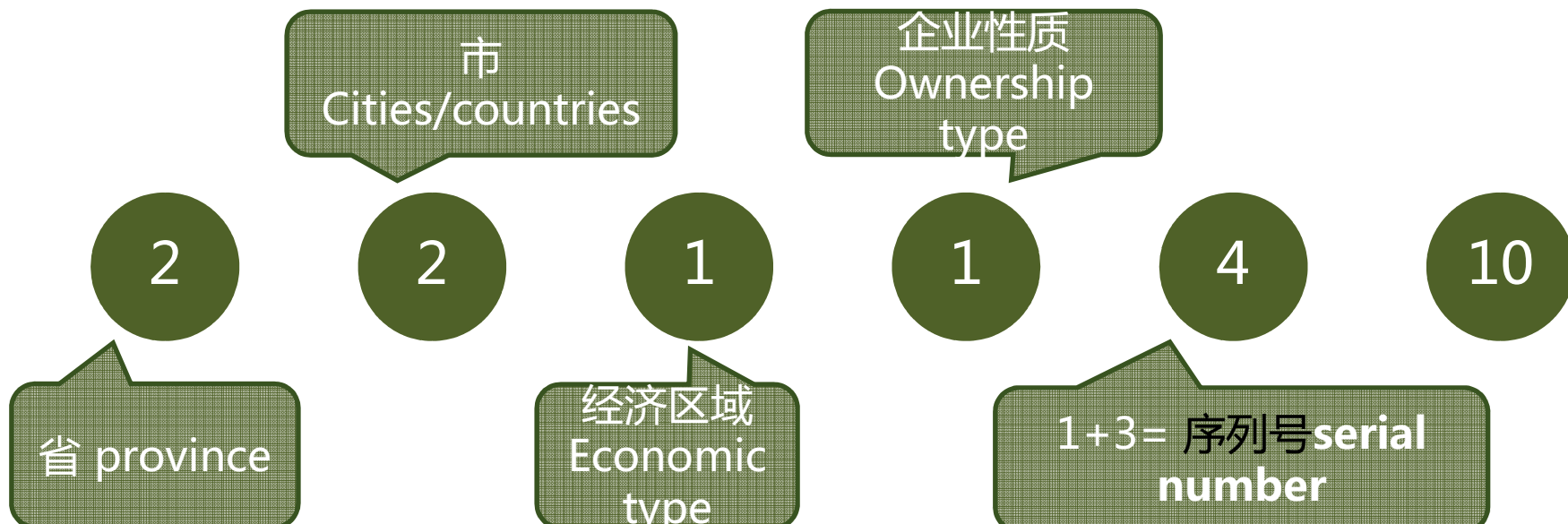
# 收发货人

# Importer/Exporter



收发货人按在中国注册的境内法人、其他组织或个人统计。

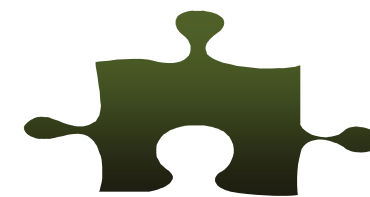
Importer/Exporter of import and export goods is recorded in terms of the legal persons, other organizations or individuals that register with the customs.





# 收发货人

# Importer/Exporter



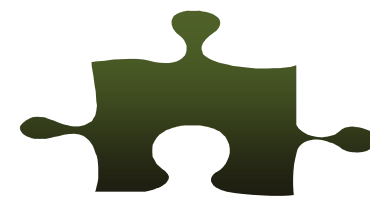
## 2017年前7个月全国进出口商品收发货人所在地表 Export from Jan. to Jul. by Trader' s Registration

	Total in 100USD	Pct change%	Share%
	2,249,345,609	12.3	100
<b>Beijing</b>	181,872,561	15.5	8.1
• • •			
<b>Shanghai</b>	264,626,396	11.6	11.8
<b>Jiangsu</b>	322,560,834	14.4	14.3
<b>Suzhou</b>	170,799,987	12.2	7.6

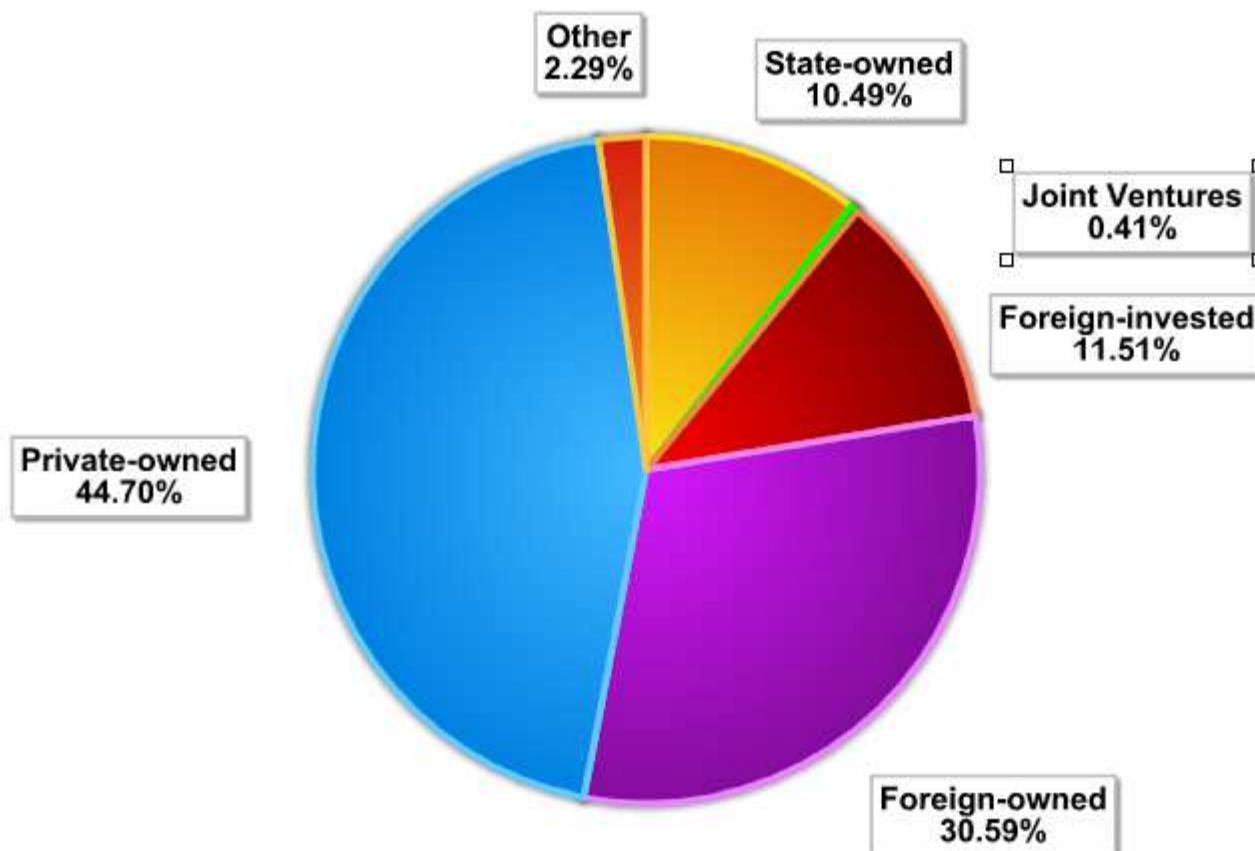


# 收发货人

# Importer/Exporter

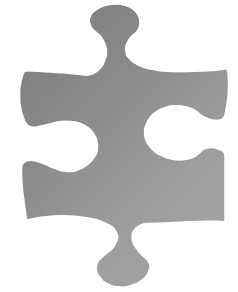


2017年前7个月全国出口货物企业性质构成图  
Export from Jan. to Jul. by Ownership of Traders





# 贸易伙伴 Trading partner



---

## 原产国 Origin

According to Rule of origin. The Country for goods wholly produced (obtained), substantially transferred

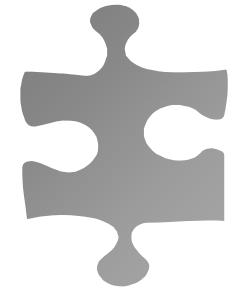
## 目的国 Destination

Last country known when export, no matter whether or not initially dispatched to third country, or having commercial transaction.



# 贸易伙伴

## Trading partner



---

### 启运国 Consignment for import

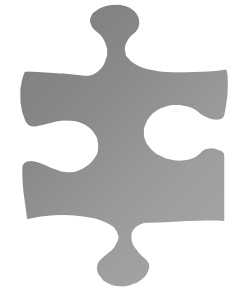
the country from which the goods were dispatched to importing country, without commercial transaction in intermediate transporting country

### 运抵国 Consignment for export

the country to which goods are dispatched by exporting country, without commercial transaction in intermediate transporting country



# 贸易伙伴 Trading partner



**不同关境 Different Customs Territory**

**不同统计地域 Different Statistics Territory**



# 运输方式 Transport Mode



运输方式按进出境运输方式统计。

Mode of transport is recorded at the port of departure for export, and port of arrival for import.



水路Water  
公路Road  
铁路Rail  
航空Air  
邮政Postal  
其他Other

关境 Customs Territory



# 境内目的地、货源地 Domestic Location



进口 For import:

进口货物最终消费或进一步加工使用的地点。

Where imported goods is finally delivered, consumed or further processed.

出口 For export:

出口货物生产或发出的地点。

Where exported goods is originated or originally dispatched.

2

2

1

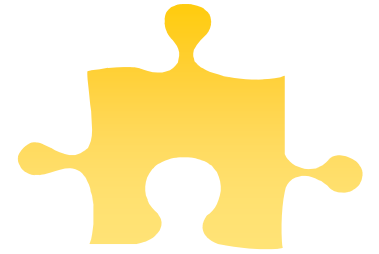
5





# 关别

## Customs District/Port



- 报关关别 Customs District:  
按接收申报的海关统计  
where the declarations is accepted
- 进出口岸 Customs Port:  
按实际进出境的海关监管地点统计  
where the imports & exports entering & leaving Customs Territory

2

2

4

0101 首都机场海关 Beijing Airport Customs



# 统计时间 Date



---

进口 For import:

按货物放行时间统计。

When imported goods is released from customs.

出口 For export:

按货物结关时间统计。

When exported goods is cleared from customs.

按公历月统计 by calendar month



# 统计价值 Statistics Value

## 统计价值 Value

- 进口 CIF value for imports
- 出口 FOB value for export

按人民币和美元计价统计  
Expressed in RMB and USD



# 统计价值 Statistics Value

## 汇率 Currency Exchange

- 折人民币：月度征税用汇率

To RMB: monthly exchange rate for duty collection by Bank of China

- 折美元：月度统计用汇率

To USD: monthly exchange rate for statistics by SAFE(State Administration of Foreign Exchange)



# 数量

## Quantity

- 按统计商品目录规定的计量单位所对应数量统计。

The quantity of import and export goods is recorded in terms of the measurement units specified in CCCC.

- 计量单位按商品属性设置。

Units are set according to the characteristics of commodity.

- 大部分商品具有2个计量单位。

Some commodities have supplementary unit.

# 统计 资料来源

SOURCE  
OF  
STATS





# 统计资料来源

## Statistics Source

货物报关单  
Declarations

简易货物报关单  
Simplified  
declarations





# 统计资料来源 Statistics Source

customs.gov.cn/customs/302249/302256/302267/356319/index.html



中华人民共和国海关总署

GENERAL ADMINISTRATION OF CUSTOMS, P. R. CHINA

请输入搜索关键字

查询

热词：进出口 | 关税 | 海关编码

您的位置：首页 > 信息公开 > 海关法规 > 海关法规

【法规类型】 海关规范性文件

【内容类别】 综合类

【文号】 总署公告〔2016〕28号

【发文机关】 海关总署

【发布日期】 2016-4-15

【生效日期】 2016-5-16

【效力】 有效

【效力说明】

## 海关总署公告2016年第28号（关于修改进出口货物报关单和进出境货物备案清单格式的公告）

总署公告〔2016〕28号

为进一步规范进出口货物收发货人的申报行为，根据《海关总署关于修订〈中华人民共和国海关进出口货物报关单填制规范〉的公告》（海关总署2016年第20号公告）要求，现决定对进出口货物报关单和进出境货物备案清单格式进行修改，有关修改内容公告如下：

2016年5月起实施  
新版本报关单  
New  
Declaration  
forms since  
May, 2016





# 统计资料来源

## Statistics Source

附件 1

仅供核对用

### 中华人民共和国海关进口货物报关单

预录入编号:

海关编号:

收发货人		进口口岸		进口日期		申报日期			
消费使用单位		运输方式	运输工具名称		提运单号				
申报单位		监管方式		征免性质		备案号			
贸易国(地区)		启运国(地区)		装货港		境内目的地			
许可证号		成交方式	运费		保费		杂费		
合同协议号		件数	包装种类		毛重(千克)		净重(千克)		
集装箱号		随附单证							
标记唛码及备注									
项号	商品编号	商品名称、规格型号		数量及单位	原产国(地区)	单价	总价	币制	征免



# 统计资料来源

## Statistics Source

附件 2

仅供核对用

### 中华人民共和国海关出口货物报关单

预录入编号:

海关编号:

收发货人		出口口岸		出口日期		申报日期	
生产销售单位		运输方式	运输工具名称		提运单号		
申报单位		监管方式		征免性质		备案号	
贸易国(地区)		运抵国(地区)		指运港		境内货源地	
许可证号		成交方式	运费		保费		杂费
合同协议号		件数	包装种类		毛重(千克)		净重(千克)
集装箱号		随附单证					
标记唛码及备注							
项号	商品编号	商品名称、规格型号	数量及单位	最终目的国(地区)	单价	总价	币制 征免



# 统计资料来源

## Statistics Source

附件 3

### 中华人民共和国海关进境货物备案清单

仅供核对用

预录入编号:

海关编号:

收发货人		进境口岸:	备案号	进境日期	申报日期		
消费使用单位		监管方式	贸易国(地区)	启运国(地区)	境内目的地		
申报单位		运输方式	运输工具名称	提运单号			
许可证号	成交方式	运费	保费	杂费			
件数	毛重(千克)	净重(千克)	随附单证				
标记唛码及备注							
项号	商品编号	商品名称、规格型号	数量及单位	原产国(地区)	单价	总价	币制



# 统计资料来源

## Statistics Source

附件 4

### 中华人民共和国海关出境货物备案清单

仅供核对用

预录入编号:

海关编号:

收发货人		出境口岸	备案号	出境日期	申报日期		
生产销售单位		监管方式	贸易国(地区)	运抵国(地区)	境内货源地		
申报单位		运输方式	运输工具名称	提运单号			
许可证号	成交方式	运费	保费	杂费			
件数	毛重(千克)	净重(千克)	随附单证				
标记唛码及备注							
项号	商品编号	商品名称、规格型号	数量及单位	最终目的国(地区)	单价	总价	币制

# 统计 流程

PROCESS  
OF  
STATS





# 数据处理

## Data Processing

收集  
Collection



审核  
Verification



编制资料  
Compilation

➤ 从上世纪80年代开始自动采集报关单数据项目

Computerized since mid 80' s

➤ H2010 贸易统计系统

Trade Statistics Data System

➤ 统计综合管理系统

System of Integrated Management of Statistics





# 处理流程 Data Processing

隶属海关负责审核本关区报  
关数据

First check of Statisticians  
at local customs house



H2010贸易统计系统界面  
Interface of H2010TSD



# 处理流程Data Processing

直属海关负责审核关区数据  
Review of Statistics at  
Customs District

检验表审核															
统计类型	报关单号	报号	红蓝字	经营单位	收发货地	贸易方式	起运国	产国别	运输方式	分类通关	商品编号	商品名称	第一数量	第一单位	第二数量
检验表审核													01	009	0
													04	009	0
													006	009	0
													002	009	0
													002	009	0
													2	009	0
													000	009	0
													004	009	0
													002	009	0
													004	009	0
													002	009	0
													009	009	0
													1	001	150
													4	001	202.4
													2	001	264
													012	009	0
													002	009	0
													02	009	0
													6	001	28.2
													9	001	34.85
													15	001	190.85
													17	001	190.8
													100	001	501
													160	001	505.4
													4	001	50
													11	001	150.2
													44	001	1251.42
													14	001	2010
													9	001	1169
													1	001	41
													1	001	8
													200	001	42
													2	001	528.9
													12	000	0
													1.1	009	0

贸易统计综合管理系统界面  
Interface of SIMS





# 处理流程 Data Processing

海关总署负责审核全国数据  
Final Review of Statistics  
at GACC

海关贸易统计数据综合管理系统

进度控制室

数据年月: 2009 年 11 月

当前任务: 更正文件导出2009-12-09 10:21:002009-12

环节	工作内容	01	02	04	06	07	08	09	15	19	22	23	29	31	33	35	37	40	42	46	47	49	51	52	53	57	60	64	67	68	72	79	80	83	85	88	94	95	96	97														
1	1.1更正文件接收与确认	●	●	●	●	●	●	●	●	●	●	●	●	●	●	●	●	●	●	●	●	●	●	●	●	●	●	●	●	●	●	●	●	●	●	●	●	●	●	●	●	●	●	●										
2	1.2更正文件入库	●	●	●	●	●	●	●	●	●	●	●	●	●	●	●	●	●	●	●	●	●	●	●	●	●	●	●	●	●	●	●	●	●	●	●	●	●	●	●	●	●	●	●	●									
3	1.3更正文件检控-1错误信息	●	●	●	●	●	●	●	●	●	●	●	●	●	●	●	●	●	●	●	●	●	●	●	●	●	●	●	●	●	●	●	●	●	●	●	●	●	●	●	●	●	●	●	●									
4	1.3更正文件检控-2模拟更正	●	●	●	●	●	●	●	●	●	●	●	●	●	●	●	●	●	●	●	●	●	●	●	●	●	●	●	●	●	●	●	●	●	●	●	●	●	●	●	●	●	●	●	●	●								
5	1.4异常数据处理(手动)	●	●	●	●	●	●	●	●	●	●	●	●	●	●	●	●	●	●	●	●	●	●	●	●	●	●	●	●	●	●	●	●	●	●	●	●	●	●	●	●	●	●	●	●	●								
6	1.5总署初审-1审核错误信息(手动)	●	●	●	●	●	●	●	●	●	●	●	●	●	●	●	●	●	●	●	●	●	●	●	●	●	●	●	●	●	●	●	●	●	●	●	●	●	●	●	●	●	●	●	●	●								
7	1.5总署初审-2审核拟更正(手动)	●	●	●	●	●	●	●	●	●	●	●	●	●	●	●	●	●	●	●	●	●	●	●	●	●	●	●	●	●	●	●	●	●	●	●	●	●	●	●	●	●	●	●	●	●	●							
8	1.5总署初审-3审大数量(手动)	●	●	●	●	●	●	●	●	●	●	●	●	●	●	●	●	●	●	●	●	●	●	●	●	●	●	●	●	●	●	●	●	●	●	●	●	●	●	●	●	●	●	●	●	●	●							
9	1.5总署初审-4审大金额(手动)	●	●	●	●	●	●	●	●	●	●	●	●	●	●	●	●	●	●	●	●	●	●	●	●	●	●	●	●	●	●	●	●	●	●	●	●	●	●	●	●	●	●	●	●	●	●	●						
10	1.6直属关答复核查	●	●	●	●	●	●	●	●	●	●	●	●	●	●	●	●	●	●	●	●	●	●	●	●	●	●	●	●	●	●	●	●	●	●	●	●	●	●	●	●	●	●	●	●	●	●	●						
11	1.6总署确认反馈	●	●	●	●	●	●	●	●	●	●	●	●	●	●	●	●	●	●	●	●	●	●	●	●	●	●	●	●	●	●	●	●	●	●	●	●	●	●	●	●	●	●	●	●	●	●	●	●					
12	1.7总署复核(手动)	●	●	●	●	●	●	●	●	●	●	●	●	●	●	●	●	●	●	●	●	●	●	●	●	●	●	●	●	●	●	●	●	●	●	●	●	●	●	●	●	●	●	●	●	●	●	●	●	●				
13	1.8拟处理与真实更正	●	●	●	●	●	●	●	●	●	●	●	●	●	●	●	●	●	●	●	●	●	●	●	●	●	●	●	●	●	●	●	●	●	●	●	●	●	●	●	●	●	●	●	●	●	●	●	●	●				
14	2.1月度数据接收比对	●	●	●	●	●	●	●	●	●	●	●	●	●	●	●	●	●	●	●	●	●	●	●	●	●	●	●	●	●	●	●	●	●	●	●	●	●	●	●	●	●	●	●	●	●	●	●	●	●	●			
15	2.2月度数据预处理与入库	●	●	●	●	●	●	●	●	●	●	●	●	●	●	●	●	●	●	●	●	●	●	●	●	●	●	●	●	●	●	●	●	●	●	●	●	●	●	●	●	●	●	●	●	●	●	●	●	●	●	●		
16	2.3月度数据初始检控-1错误信息	●	●	●	●	●	●	●	●	●	●	●	●	●	●	●	●	●	●	●	●	●	●	●	●	●	●	●	●	●	●	●	●	●	●	●	●	●	●	●	●	●	●	●	●	●	●	●	●	●	●	●		
17	2.3月度数据初始检控-2千万美元	●	●	●	●	●	●	●	●	●	●	●	●	●	●	●	●	●	●	●	●	●	●	●	●	●	●	●	●	●	●	●	●	●	●	●	●	●	●	●	●	●	●	●	●	●	●	●	●	●	●	●		
18	2.3月度数据初始检控-3百万美元	●	●	●	●	●	●	●	●	●	●	●	●	●	●	●	●	●	●	●	●	●	●	●	●	●	●	●	●	●	●	●	●	●	●	●	●	●	●	●	●	●	●	●	●	●	●	●	●	●	●	●	●	
19	2.4异常数据处理(手动)	●	●	●	●	●	●	●	●	●	●	●	●	●	●	●	●	●	●	●	●	●	●	●	●	●	●	●	●	●	●	●	●	●	●	●	●	●	●	●	●	●	●	●	●	●	●	●	●	●	●	●		
20	2.5重复标识码检查(手动)	●	●	●	●	●	●	●	●	●	●	●	●	●	●	●	●	●	●	●	●	●	●	●	●	●	●	●	●	●	●	●	●	●	●	●	●	●	●	●	●	●	●	●	●	●	●	●	●	●	●	●	●	
21	2.6灵活检控-1报表(手动)	●	●	●	●	●	●	●	●	●	●	●	●	●	●	●	●	●	●	●	●	●	●	●	●	●	●	●	●	●	●	●	●	●	●	●	●	●	●	●	●	●	●	●	●	●	●	●	●	●	●	●	●	●

贸易统计综合管理系统界面  
Interface of SIMS



质量  
控制

Quality  
Control





# 数据质量控制

## Quality Control

### 事前控制 Prevention

- 规则科学、报关员培训 Guidelines & trainings
- 各类预录入系统和H2010逻辑检控参数设置与更新 Parameters before data acceptance

### 事中控制 Check

- H2010TSD系统宏微观检控  
Check in the Statistics Data Base

### 事后控制 Review

- 宏观检控 Review the trend
- 专项检控 Specific Review



# 数据质量控制

## Quality Control

### 微观检控——检查单一记录的准确性

#### Record-level check

1. 参数检控 detect risk by pre-determined para
2. 同名异号 different classification with same description
3. 抽样检控 random selection
4. 极值检控 extreme values

### 宏观检控——检查汇总数据变动趋势的合理性

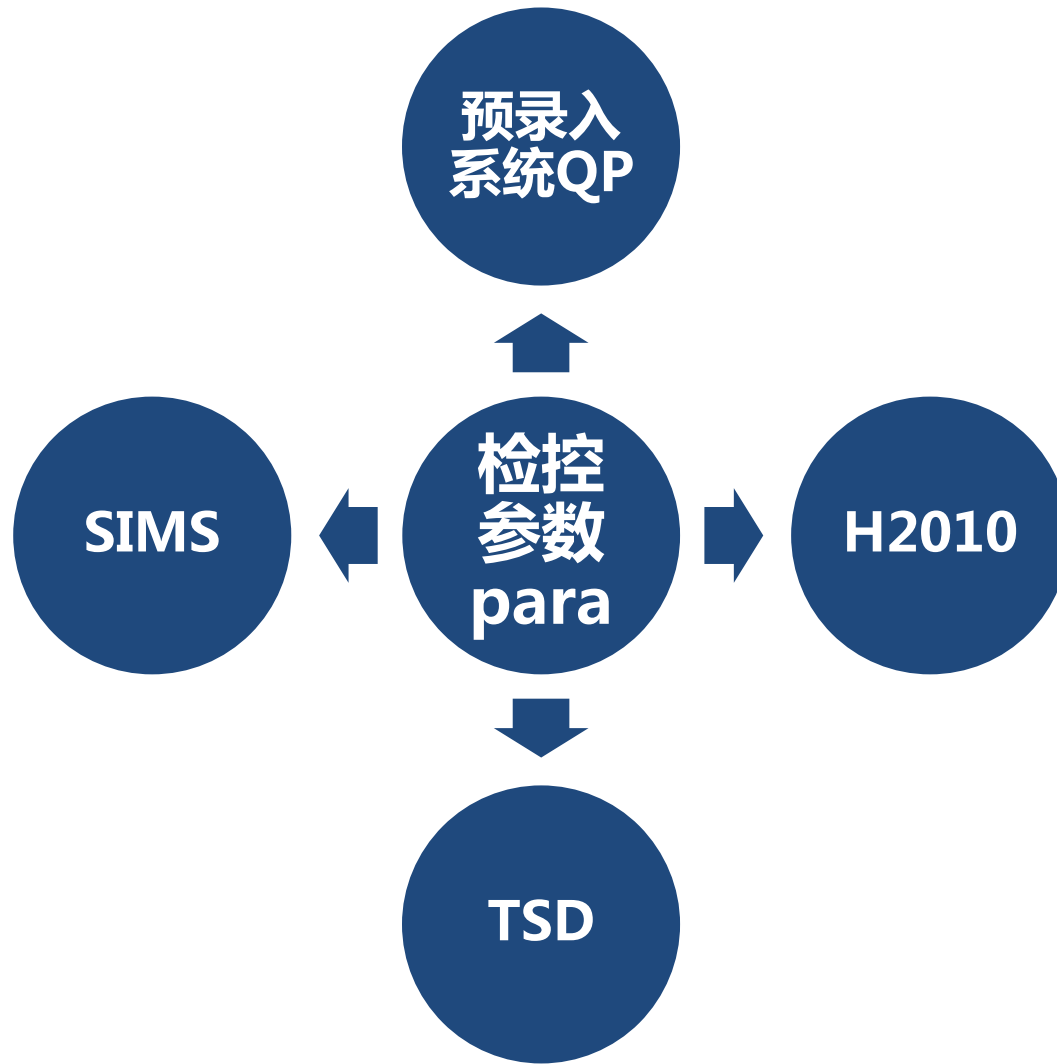
#### Trend analysis

5. 汇总检控 trend check



# 数据质量控制

## Quality Control





# 数据质量控制

## Quality Control

错误信息检  
控参数  
Valid

必错100%  
error

逻辑检控参数  
Logic

不合理Not  
reasonable

罕见Rare  
cases

阈值检控参数  
Threshold

价控参数  
Unit Price Range

数量比参数  
Qty Ratio Range

其他参数  
other

专项检控  
Specific check



# 数据质量控制

## Quality Control

### 错误信息参数示例

#### Example of Validity Check

- EB00 : 非法商品编码invalid  
Commodity Code
- EBD0 : 法定第一计量单位错误invalid  
qty 1
- EGH0 : 法定第二计量单位为空但第二数量不为空invalid qty 2





# 数据质量控制

## Quality Control

### 错误信息参数示例

Example of Logic Check

L278 : 不合理运输路线

unreasonable route





# 数据质量控制

## Quality Control

### 阈值检控参数示例

#### Example of Threshold Para

Unit Price



Iron ore

0.04

0.4

0.45

0.48

0.52



# 数据质量控制

## Quality Control

### 阈值检控参数示例

#### Example of Threshold Para

- 9506.4010 ---Table tennis balls  
 $0.2 < \text{kg/hundred} < 0.4$
- 82.05:Hand tools  
 $0.01 < \text{unit/kg} < 10$
- 2208.6000 –Vodka  
 $0.8 < \text{kg/L} < 1.1$



# 数据质量控制

## Quality Control

第二十一条 依法应当申报的项目未申报或者申报不实影响海关统计准确性的，海关应当责令当事人予以更正，需要予以行政处罚的，依照《中华人民共和国海关行政处罚实施条例》的规定予以处罚。

### Article 21 of Regulation

Where the parties fail to declare the items that are required by law to be declared, or declare untruthfully, which affects the accuracy of customs statistics, the customs shall order them to make corrections and, if it deems it necessary to impose on them administrative penalties, it shall impose on them penalties in accordance with the Regulations of the People's Republic of China on Implementing Customs Administrative Penalty.



**谢谢**

**Thank you for your attention**

李芊

Li Qian

副处长

Deputy Chief

贸易统计处

Trade Statistics Division

综合统计司

Statistics Department, GACC

Tel: 86-10-65195640

Fax: 86-10-65195610

Email: [liqian@mail.customs.gov.cn](mailto:liqian@mail.customs.gov.cn)